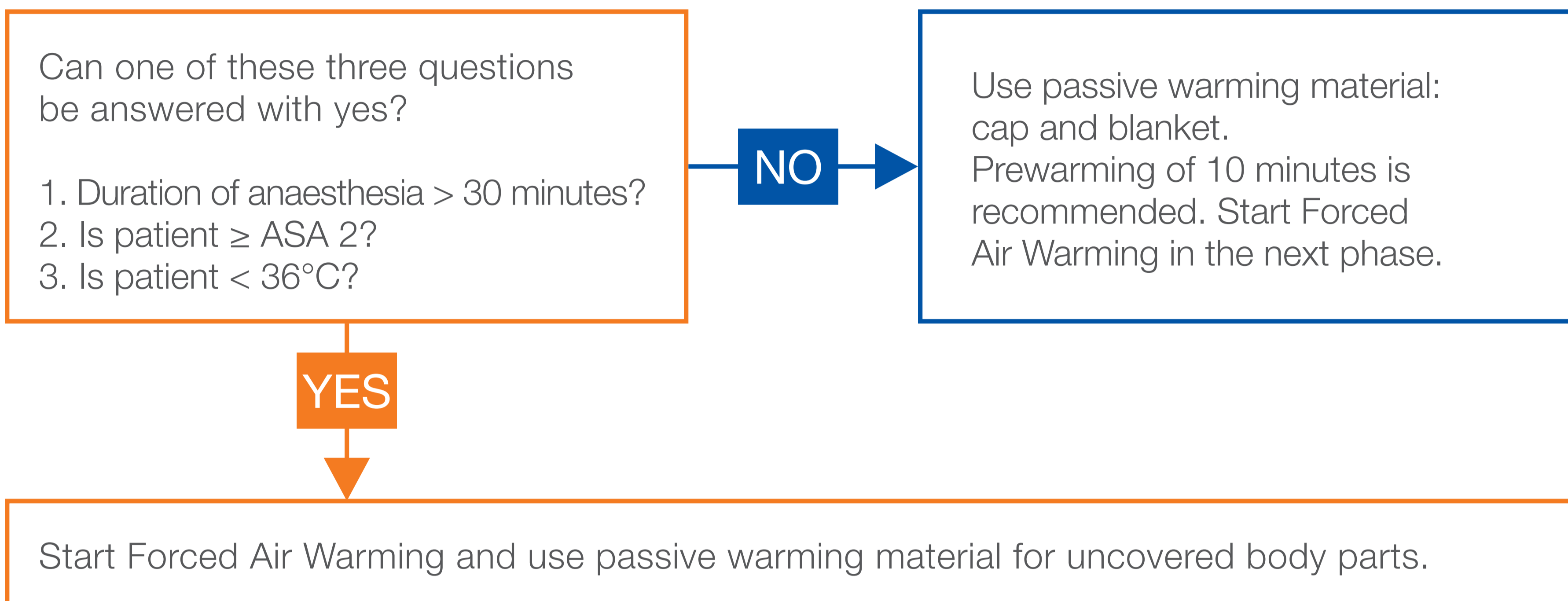


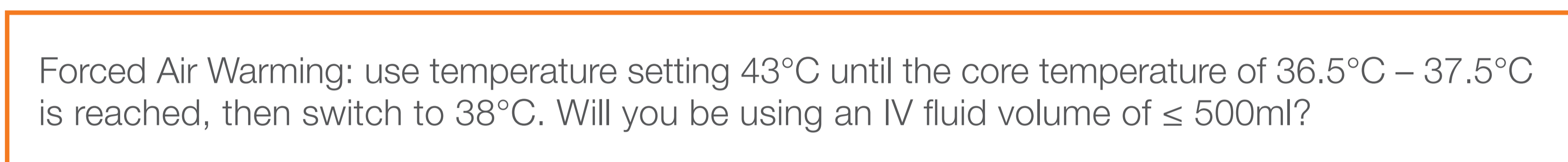
You are the Patient Temperature Manager

Patient Temperature Management Guide*

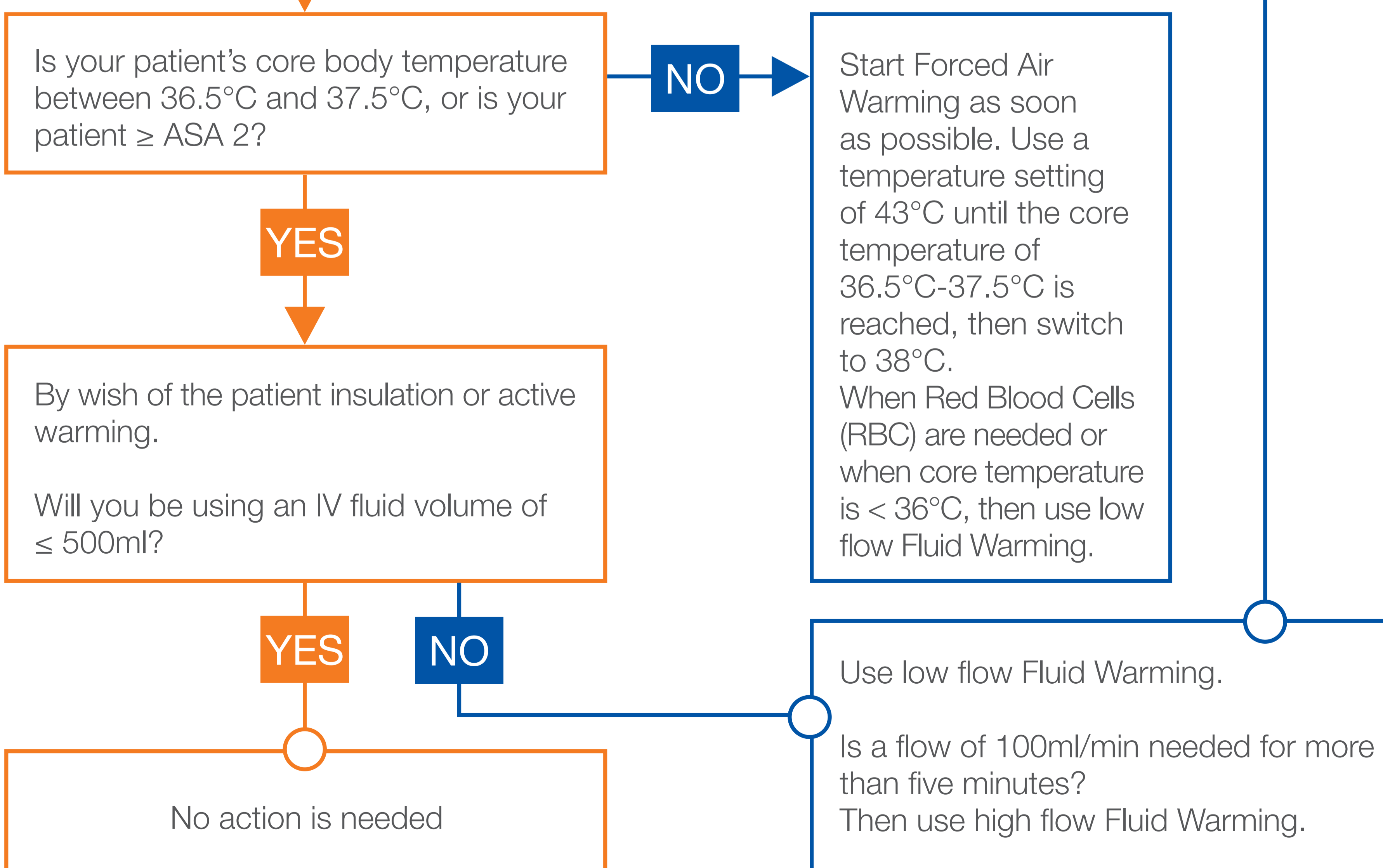
1h Pre-operative phase



Per (intra)- operative phase



24h Post-operative phase



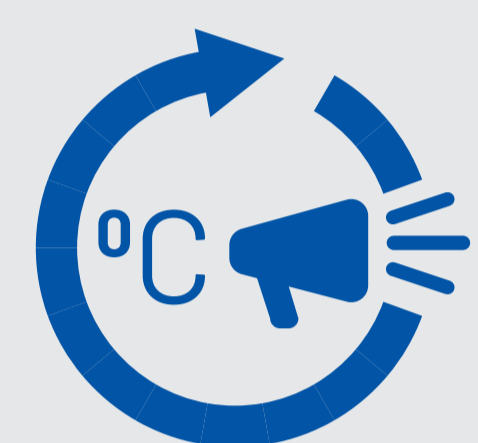
*This guide is based on the international guidelines of S3 (Germany), NICE (UK) and ASPAN (USA). We strongly recommend using this guide or acting in accordance with your institutional protocol.

Perioperative Pathway

Key factors



Always manage your patient to ensure a core body temperature above 36°C



Prewarm and inform (about PTM) all your patients



Monitor every patient's temperature every 15 minutes



Apply Patient Temperature Management when anaesthesia takes longer than 30 minutes



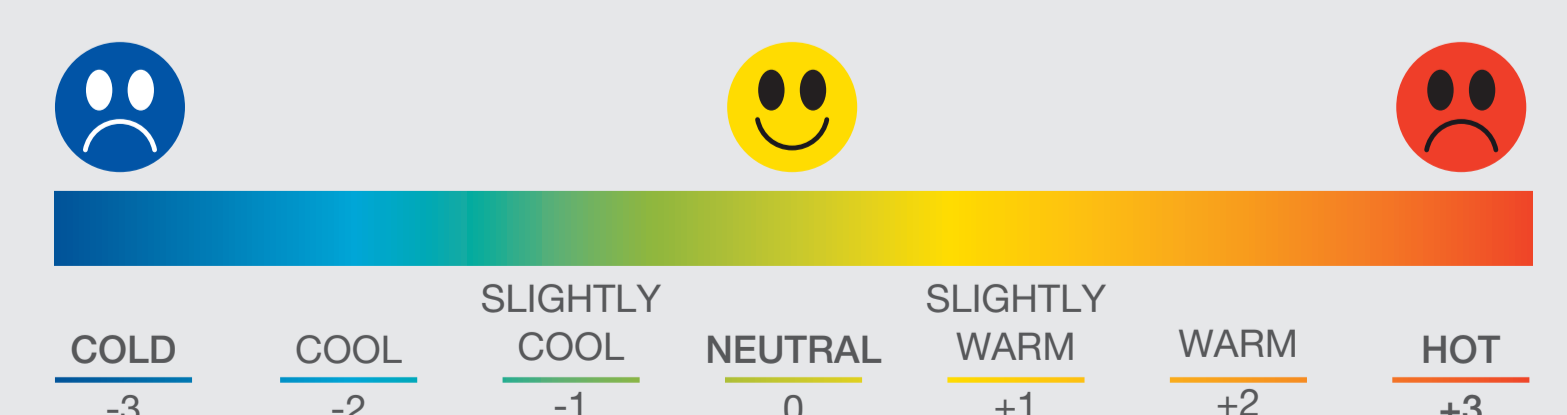
Always warm fluids when administered volume is more than 500 ml

This guide is intended for all patients except:

- Children and young people under 18 years of age
- Pregnant women
- Patients who have been treated with therapeutic hypothermia
- Patients undergoing operative procedures under local anaesthesia
- Patients with severe head injuries resulting in impaired temperature control

Thermal comfort scale

Does your patient feel comfortably warm? Please ask them to rate their comfort**:



**ANSI/ASHRAE Standard 55